



 the  
**malvern**  
collection



# *Price List*

**Sheds, Workshops,  
Potting Sheds &  
Greenhouses  
2023**



**HANDMADE IN WORCESTERSHIRE  
FOR OVER 50 YEARS**

# contents

<b>3</b>	Welcome to the Malvern Collection
<b>4-5</b>	Bewdley Apex and Bewdley Pent
<b>6-7</b>	Bewdley Corner and Potting Shed
<b>8-9</b>	Victorian and Malvern Heavy Duty Corner
<b>10</b>	Malvern Apex Front Window Configurations
<b>11</b>	Malvern Reverse Apex and Malvern Pent Window and Door Configurations
<b>12-13</b>	Malvern Heavy Duty Apex
<b>14-15</b>	Malvern Heavy Duty Reverse Apex
<b>16-17</b>	Malvern Pent
<b>18</b>	Glossary of Terms
<b>19</b>	Important Points to Note

# welcome to

## ***the malvern collection***

### **HANDMADE IN WORCESTERSHIRE FOR OVER 50 YEARS**

In the early 1970s, we started to design and produce garden buildings at our factory in Worcestershire. All of our buildings are made to order and handcrafted using traditional carpentry techniques by skilled craftsmen, which are then delivered and installed by our own teams of experienced fitters across the country.

The Malvern Collection design and make a wide collection of buildings, from the humble shed right through to fully lined, insulated and double glazed garden rooms and offices designed for all year round use.

We offer a wide selection of optional extras which enable you to create your ideal garden room to meet not only your practical needs but also your own personal taste.

Our paint spraying shop is one of the most advanced spraying and drying facilities in the garden building industry, where buildings can be coated with a highly durable and weather resistant, low maintenance paint and primer system, which will protect and enhance your building.

At Malvern, we use only the highest quality materials from sustainable sources. Our redwood buildings are constructed using kiln dried slow grown pine from Sweden's Northern sawmills and our cedar buildings are constructed using Canadian Western Red kiln dried cedar.

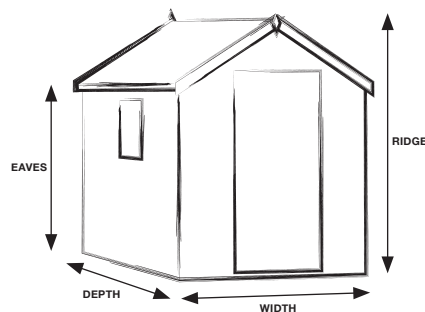
We strongly recommend that you visit one of our display sites where you can examine for yourself the quality, design and materials used in the manufacture of our buildings. Experienced staff will be on hand to discuss your individual requirements.

## Standard Features

- 13mm redwood cladding
- Heavy duty framework throughout
- All ridge heights under 2.5m
- Single door
- Black ironmongery
- Opening window(s) (quantity dependant on size and model)
- Framed ledged and braced door
- Lockable rimlock and handle door catch
- 3 door hinges per door for extra strength
- Turn button top and bottom of door
- Tongue and groove timber roof and floor
- Polyester mineral felt - available in green, black or red
- High quality timber treatment applied throughout prior to delivery
- A wide range of sizes to choose from

## Options

- Toughened glass
- Double doors on 8' wide models
- Additional fixed and opening windows
- Workbenches and shelves
- A set of pressure treated floor bearers



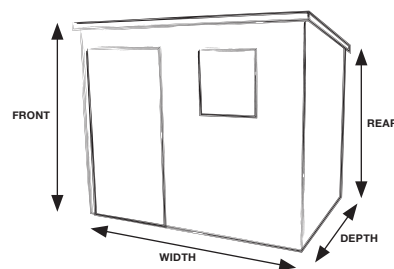
BEWDLEY APEX		
Width	Ridge Height	Eaves Height
1.22m (4')	2.05m	1.73m
1.52m (5')	2.12m	1.73m
1.83m (6')	2.19m	1.73m
2.44m (8')	2.31m	1.73m
Single Door	<b>1.22m wide (4')</b>	0.66m wide
	<b>Other widths</b>	0.89m wide
Optional Double Doors		1.50m wide

## Standard Features

- 13mm redwood cladding
- Heavy duty framework throughout
- All ridge heights under 2.5m
- Single door
- Black ironmongery
- Opening window(s) (quantity dependant on size and model)
- Framed ledged and braced door
- Lockable rimlock and handle door catch
- 3 door hinges per door for extra strength
- Turn button top and bottom of door
- Tongue and groove timber roof and floor
- Polyester mineral felt - available in green, black or red
- High quality timber treatment applied throughout prior to delivery
- A wide range of sizes to choose from

## Options

- Toughened glass
- Additional fixed and opening windows
- Pent sheds have four possible door positions: Left of front, right of front, left hand end and right hand end
- Workbenches and shelves
- A set of pressure treated floor bearers



BEWDLEY PENT		
Width	Front Height	Rear Height
1.22m (4')	2.12m	1.86m
1.52m (5')	2.12m	1.86m
1.83m (6')	2.12m	1.86m
2.44m (8')	2.12m	1.86m
Single Door	<b>1.83m wide (6')</b>	0.66m wide
	<b>Other widths</b>	0.89m wide

## Bewdley Apex

Size d x w (m)	Size d x w (ft)	Redwood	Toughened Glass	Floor Bearers	Installation	No. of Windows
1.22 x 1.22	4' x 4'	665	55	80	100	1
1.83 x 1.22	6' x 4'	830	55	85	110	1
2.44 x 1.22	8' x 4'	965	55	105	125	1
2.13 x 1.52	7' x 5'	975	55	105	125	1
1.83 x 1.83	6' x 6'	995	55	115	125	1
2.44 x 1.83	8' x 6'	1,110	55	120	155	1
3.05 x 1.83	10' x 6'	1,395	85	130	185	2
2.44 x 2.44	8' x 8'	1,455	55	140	190	1
3.05 x 2.44	10' x 8'	1,795	85	150	230	2
3.66 x 2.44	12' x 8'	1,995	85	170	270	2

Extra fixed window	45	0.23m (9") Wide Shelf	65 per running metre
Extra opening window	85	0.38m (15") Wide Shelf	80 per running metre
Double door upgrade on 2.44m (8") wide Apex model	140	0.38m (15") Wide Workbench	80 per running metre
		0.61m (24") Wide Workbench	100 per running metre

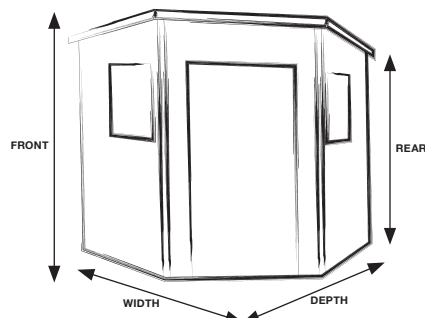
## Bewdley Pent

Size d x w (m)	Size d x w (ft)	Redwood	Toughened Glass	Floor Bearers	Installation	No. of Windows	
						Door in front	Door in end
1.22 x 1.22	4' x 4'	715	-	80	100	-	1
1.83 x 1.22	6' x 4'	895	55	85	110	1	1
2.44 x 1.22	8' x 4'	1,035	55	105	125	1	1
2.13 x 1.52	7' x 5'	1,045	55	105	125	1	1
1.83 x 1.83	6' x 6'	1,055	55	115	125	1	1
2.44 x 1.83	8' x 6'	1,165	55	120	155	1	1
3.05 x 1.83	10' x 6'	1,490	55	130	185	1	2
2.44 x 2.44	8' x 8'	1,535	55	140	190	1	1
3.05 x 2.44	10' x 8'	1,900	55	150	230	1	2
3.66 x 2.44	12' x 8'	1,535	55	140	190	1	2

Extra fixed window	45	0.23m (9") Wide Shelf	65 per running metre
Extra opening window	85	0.38m (15") Wide Shelf	80 per running metre
		0.38m (15") Wide Workbench	80 per running metre
		0.61m (24") Wide Workbench	100 per running metre

## Standard Features

- 13mm redwood cladding
- Heavy duty framework throughout
- All ridge heights under 2.5m
- Single door
- Black ironmongery
- Opening window(s) (quantity dependant on size and model)
- Framed ledged and braced door
- Lockable rimlock and handle door catch
- 3 door hinges per door for extra strength
- Turn button top and bottom of door
- Tongue and groove timber roof and floor
- Polyester mineral felt - available in green, black or red
- High quality timber treatment applied throughout prior to delivery
- A wide range of sizes to choose from



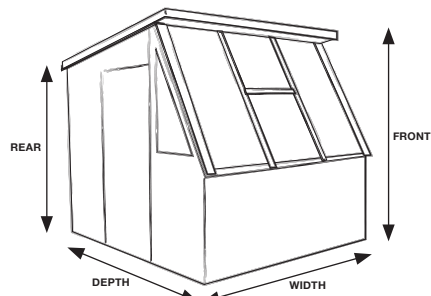
BEWDLEY CORNER		
	Front Height	Rear Height
All sizes	2.29m	1.86m
Single Door	0.89m wide	

## Options

- Toughened glass
- Additional fixed and opening windows
- Workbenches and shelves
- A set of pressure treated floor bearers

## Standard Features

- Heavy duty framework throughout
- Heavy duty floor
- Tongue and groove timber roof and floor
- Polyester mineral felt - available in green, black or red
- Guttering and downpipe in a choice of three colours
- Fully framed, ledged and braced door
- 3 heavy duty hinges per door
- Heavy duty staging under windows
- One opening vent window to the front
- Side windows
- 4mm toughened glass
- Black or chrome ironmongery - please specify at time of order
- Front roof overhang
- High quality timber treatment applied throughout prior to delivery (excluding pressure treated)
- Six sizes to choose from



POTTING SHED		
	Front Height	Rear Height
All sizes	2.29m	1.86m
Single Door	0.89m wide	

## Options

- A choice of Heavy Duty Redwood, Heavy Duty Pressure Treated or Western Red Cedar cladding
- Coloured painted finish - wide selection of colours
- Stable door
- Guttering and downpipe in a choice of three colours
- A set of pressure treated floor bearers

## Bewdley Corner

Size w x d (m)	Size w x d (ft)	Redwood	Toughened Glass	Floor Bearers	Installation
<b>2.13 x 2.13</b>	<b>7' x 7'</b>	1,565	85	135	155
<b>2.44 x 2.44</b>	<b>8' x 8'</b>	1,825	85	140	190

## Additional Windows and Options

Extra Fixed Window	45
Extra Opening Window	85

0.23m (9") Wide Shelf	65 per running metre
0.38m (15") Wide Shelf	80 per running metre
0.38m (15") Wide Workbench	80 per running metre
0.61m (24") Wide Workbench	100 per running metre

## Potting Shed

Size w x d (m)	Size w x d (ft)	Heavy Duty Redwood	Heavy Duty Pressure Treated	Standard Cedar	Coloured Painted Finish	Floor Bearers	Installation
<b>1.83 x 1.83</b>	<b>6' x 6'</b>	2,850	3,265	4,260	1,385	120	185
<b>2.44 x 1.83</b>	<b>8' x 6'</b>	3,145	3,625	4,700	1,575	130	200
<b>2.13 x 2.13</b>	<b>7' x 7'</b>	3,220	3,700	4,805	1,585	135	200
<b>2.44 x 2.13</b>	<b>8' x 7'</b>	3,500	3,990	5,180	1,685	135	215
<b>2.44 x 2.44</b>	<b>8' x 8'</b>	3,755	4,290	5,470	1,825	140	230
<b>3.05 x 2.44</b>	<b>10' x 8'</b>	4,500	5,160	6,475	2,025	150	340

## Additional Windows and Options

Stable Door Conversion in lieu of standard	155
--	-----

Additional Opening Window	
Redwood	230
Pressure Treated	240
Cedar	295

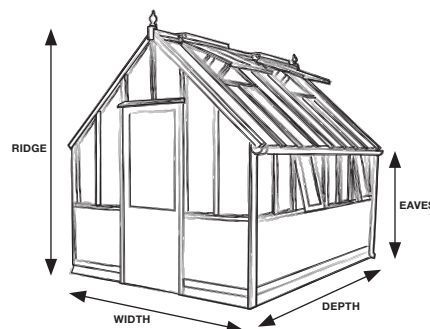
0.23m (9") Wide Shelf	65 per running metre
0.38m (15") Wide Shelf	80 per running metre
0.38m (15") Wide Workbench	80 per running metre
0.61m (24") Wide Workbench	100 per running metre
Guttering	65 per running metre

## Standard Features

- Cedar timber throughout
- Boarded base panels all round
- Automatic roof vents
- Lockable single door opening in hinged on right
- Solid brass or chrome ironmongery - please specify at time of order
- Guttering and downpipes to both sides
- Secured to base
- High quality timber treatment applied throughout prior to delivery
- A wide range of sizes to choose from

## Options

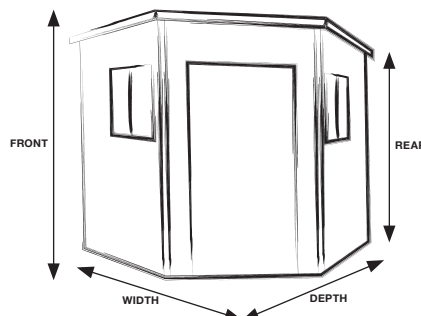
- Comprehensive paint system to protect and decorate available in a variety of colours
- Coloured painted finish - wide selection of colours
- Staging
- Shelving
- Door can be hinged on the left or made to open outwards



VICTORIAN		
Building	Ridge Height	Eaves Height
1.93m (6' 4")	2.29m	1.98m
2.39m (7' 9")	2.83m	1.58m

## Standard Features

- Heavy Duty Framework throughout
- All ridge heights under 2.5m
- 0.15m (6") roof overhang to front and two sides
- Heavy duty floor
- Black or chrome ironmongery - please specify at time of order
- Fully framed ledged and braced single door
- 3 lever mortice lock
- 3 heavy duty hinges to the door
- Single glazed 4mm toughened glass
- Tongue and groove timber roof and floor
- Polyester mineral felt – available in green, black or red
- High quality timber treatment applied throughout prior to delivery
- A wide range of sizes to choose from



MALVERN HEAVY DUTY CORNER		
	Front Height	Rear Height
All sizes	2.29m	1.86m
Single Door		0.89m wide

## Options

- A choice of Heavy Duty Redwood, Heavy Duty Pressure Treated, Heavy Duty Redwood Barnstyle, Heavy Duty Pressure Treated Barnstyle or Western Red Cedar
- Coloured painted finish – a wide selection of colours
- Tongue and groove timber lining and insulation
- Georgian style windows
- Double glazing (except Georgian)
- Hook and band hinges
- Security pack including 6 pin lock and security screws
- Workbenches and shelves
- A set of pressure treated floor bearers



## Victorian

Size d x w (m)	Size d x w (ft)	Price	Coloured Painted Finish	21" (533mm) Staging	12" (305mm) Shelving	Installation	Roof Vents/ Side Vents
1.60 x 1.93	5'3" x 6'4"	5,235	1,060	335	215	375	2/2
2.39 x 1.93	7'10" x 6'4"	6,025	1,575	500	335	405	2/2
3.12 x 1.93	10'3" x 6'4"	7,350	1,780	640	405	465	4/4
3.89 x 1.93	12'9" x 6'4"	8,520	1,970	790	505	525	4/4
4.65 x 1.93	15'3" x 6'4"	9,210	2,440	950	580	590	6/6

Size d x w (m)	Size d x w (ft)	Price	Coloured Painted Finish	25" (635mm) Staging	12" (305mm) Shelving	Installation	Roof Vents/ Side Vents
1.60 x 2.36	5'3" x 7'9"	6,170	1,575	340	215	405	2/2
2.39 x 2.36	7'10" x 7'9"	7,315	1,825	500	335	465	2/2
3.12 x 2.36	10'3" x 7'9"	8,355	2,085	650	405	535	4/4
3.89 x 2.36	12'9" x 7'9"	10,100	2,230	805	505	610	4/4
4.65 x 2.36	15'3" x 7'9"	11,075	2,605	970	580	700	6/6

## Malvern Heavy Duty Corner

Size d x w (m)	Size d x w (ft)	Heavy Duty Redwood	Heavy Duty Pressure Treated	Heavy Duty Redwood Barnstyle	Heavy Duty Pressure Treated Barnstyle	Standard Cedar	Coloured Painted Finish	Tongue & Grooved Lining & Insulation	Double Glazing	EPDM Rubber Roof	Floor Bearers	Installation
2.13 x 2.13	7' x 7'	2,755	3,030	2,755	3,030	6,095	1,585	1,670	220	365	130	175
2.44 x 2.44	8' x 8'	3,280	3,610	3,280	3,610	6,995	1,825	1,960	220	475	135	260
2.74 x 2.74	9' x 9'	3,850	4,235	3,850	4,235	7,880	2,050	2,270	220	600	165	345
3.05 x 3.05	10' x 10'	4,375	4,815	4,375	4,815	8,770	2,325	2,610	220	740	195	430

## Additional Windows and Doors

Additional Windows	Fixed		Opening	
	Single Glazed	Double Glazed	Single Glazed	Double Glazed
Standard Redwood	115	230	160	275
Standard Pressure Treated	120	240	165	285
Standard Cedar	175	295	220	340
Georgian Redwood	230	-	270	-
Georgian Pressure Treated	235	-	275	-
Georgian Cedar	325	-	365	-

Malvern Heavy Duty Corner	2.13m (7')	2.44m (8')	2.74m (9')	3.05m (10')
Georgian Single Glazed Windows	295	295	295	295

0.23m (9") Wide Shelf	65 per running metre
0.38m (15") Wide Shelf	80 per running metre
0.38m (15") Wide Workbench	80 per running metre
0.61m (24") Wide Workbench	100 per running metre

Additional Window in Door	Single Glazed	Double Glazed
Standard Redwood	115	230
Standard Pressure Treated	120	240
Standard Cedar	175	295
Georgian Redwood	230	-
Georgian Pressure Treated	235	-
Georgian Cedar	325	-

Stable Door Conversion in lieu of standard	155
Hook & Band Hinges	55 per door
Security Pack for Doors	200

# Malvern Apex Window Configurations

These layouts can be altered to suit your own individual requirements.



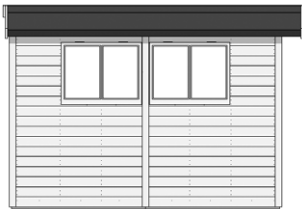
1.83m (6')



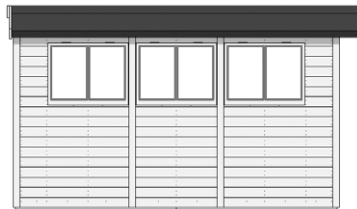
2.13m (7')



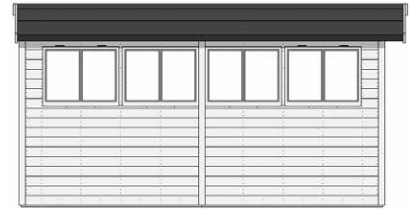
2.44m (8')



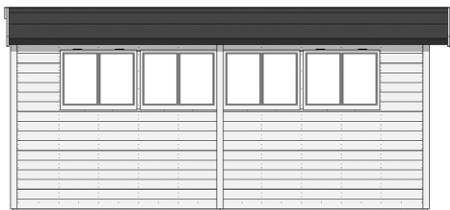
3.05m (10')



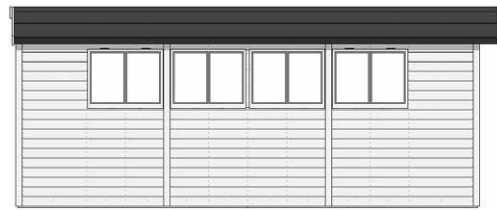
3.66m (12')



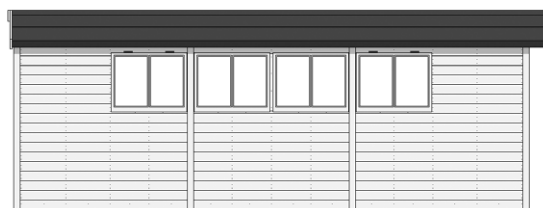
4.27m (14')



4.88m (16')



5.49m (18')



6.10m (20')

# Malvern Reverse Apex and Malvern Pent Window and Door Configurations

These layouts can be altered to suit your own individual requirements.



1.83m (6')



2.13m (7')



2.44m (8')



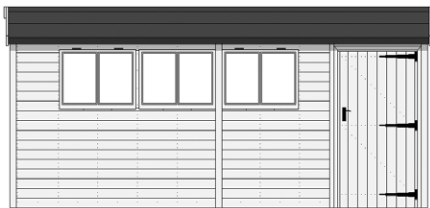
3.05m (10')



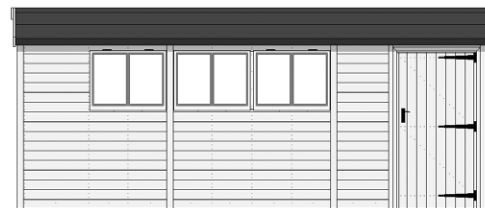
3.66m (12')



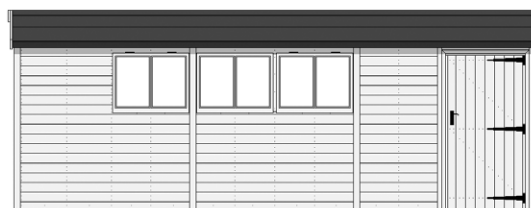
4.27m (14')



4.88m (16')



5.49m (18')



6.10m (20')

## Standard Features

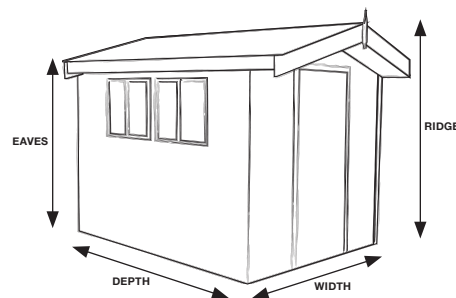
- All ridge heights under 2.5m
- Heavy duty framework throughout
- Additional diagonal framework for extra rigidity and strength
- Heavy duty floor
- Pressure treated floor joists
- Tongue and groove timber roof and floor
- Polyester mineral felt – available in green, black or red
- Fully framed, ledged and braced single door
- 3 lever mortice lock
- 3 heavy duty hinges per door
- Single glazed 4mm toughened glass
- Black or chrome ironmongery - please specify at time of order
- 0.23m (9") roof overhang above doors
- Joinery made fixed and lockable opening windows
- High quality timber treatment applied throughout prior to delivery (excluding pressure treated)
- A wide range of sizes to choose from

## Options

- A choice of Heavy Duty Redwood, Heavy Duty Pressure Treated, Heavy Duty Redwood Barnstyle, Heavy Duty Pressure Treated Barnstyle or Western Red Cedar cladding
- Higher pitch roof
- Coloured painted finish – wide selection of colours
- Bitumen mineral roof felt tiles, available in green, red or black
- Onduline roof
- Pressure treated slatted roof
- Slate effect roof tiles - a choice of 3 colours available
- Cedar slatted roof
- Pressure treated cedar shingle roof
- Double glazing (excluding Georgian)
- Tongue and groove timber lining plus insulation
- Internal partition walls
- High level security fixed windows in lieu of opening at no additional cost
- Georgian style windows
- Additional 0.91m (3') Logstore to side
- Integral open sided area
- Composite decking upgrade to open area
- Hook and band hinges
- Security pack including 6 pin lock and security screws
- Guttering and downpipe in a choice of three colours
- Heavy duty workbenches and shelves
- Double door upgrade
- No roof overhang over doors
- A set of pressure treated floor bearers

Size d x w (m)	Size d x w (ft)	Heavy Duty Redwood	Heavy Duty Pressure Treated	Heavy Duty Redwood Barnstyle
1.83 x 1.22	6' x 4'	1,520	1,670	1,520
2.13 x 1.52	7' x 5'	1,880	2,070	1,880
1.83 x 1.83	6' x 6'	1,910	2,100	1,910
2.44 x 1.83	8' x 6'	2,295	2,525	2,295
3.05 x 1.83	10' x 6'	2,770	3,045	2,770
3.66 x 1.83	12' x 6'	3,060	3,365	3,060
2.44 x 2.44	8' x 8'	2,930	3,225	2,930
3.05 x 2.44	10' x 8'	3,280	3,610	3,280
3.66 x 2.44	12' x 8'	3,630	3,995	3,630
4.27 x 2.44	14' x 8'	4,070	4,475	4,070
4.88 x 2.44	16' x 8'	4,430	4,875	4,430
3.05 x 3.05	10' x 10'	3,920	4,310	3,920
3.66 x 3.05	12' x 10'	4,375	4,815	4,375
4.27 x 3.05	14' x 10'	4,925	5,420	4,925
4.88 x 3.05	16' x 10'	5,360	5,895	5,360
5.49 x 3.05	18' x 10'	5,815	6,395	5,815
3.66 x 3.66	12' x 12'	4,840	5,325	4,840
4.27 x 3.66	14' x 12'	5,445	5,990	5,445
4.88 x 3.66	16' x 12'	5,915	6,505	5,915
5.49 x 3.66	18' x 12'	6,415	7,055	6,415
6.10 x 3.66	20' x 12'	6,990	7,690	6,990

**FOR HIGH PITCH VERSION - ADD 10% TO BUILDING  
AND ANY ADDITIONAL ROOF OPTION**



MALVERN HEAVY DUTY APEX			
Width	External		
	Ridge		Eaves
	Low	High	
1.83m (6')	2.33m	2.51m	2.04m
2.44m (8')	2.41m	2.65m	
3.05m (10')	2.43m	2.79m	
3.66m (12')	2.49m	2.94m	
Width	Internal (unlined)		
	Ridge		Eaves
	Low	High	
1.83m (6')	2.20m	2.43m	2.02m
2.44m (8')	2.29m	2.57m	
3.05m (10')	2.29m	2.71m	
3.66m (12')	2.35m	2.85m	

Heavy Duty Pressure Treated Barnstyle	Standard Cedar	Coloured Painted Finish	Tongue & Grooved Lining & Insulation	Double Glazing	Bitumen Felt Roof Tiles	Onduline Roof	Pressure Treated Slatted Roof	Cedar Slatted Roof	Cedar Shingle Roof	Slate Effect Tiled Roof	Floor Bearers	Installation
1,670	3,815	1,170	1,120	110	310	320	340	650	850	850	85	110
2,070	4,540	1,365	1,365	110	455	460	500	935	1,230	1,230	105	125
2,100	4,870	1,385	1,385	110	455	460	525	965	1,315	1,315	115	150
2,525	5,185	1,575	1,630	220	595	605	675	1,290	1,730	1,730	120	170
3,045	6,030	1,780	1,910	220	740	760	820	1,625	2,155	2,155	130	205
3,365	6,645	1,970	2,205	330	900	925	980	1,955	2,570	2,570	135	225
3,225	6,325	1,825	1,960	220	765	785	810	1,570	2,055	2,055	140	260
3,610	6,995	2,025	2,270	220	940	965	980	1,985	2,565	2,565	150	280
3,995	7,680	2,230	2,540	330	1,115	1,140	1,140	2,340	3,075	3,075	170	305
4,475	8,430	2,420	2,845	435	1,280	1,310	1,330	2,720	3,570	3,570	200	340
4,875	9,085	2,605	3,145	435	1,435	1,470	1,560	3,090	4,075	4,075	220	385
4,310	7,995	2,325	2,610	220	1,110	1,135	1,140	2,295	2,995	2,995	200	430
4,815	8,770	2,480	2,915	330	1,315	1,340	1,365	2,785	3,535	3,535	220	495
5,420	9,645	2,685	3,385	435	1,520	1,555	1,560	3,055	4,120	4,120	245	560
5,895	10,425	2,890	3,540	435	1,740	1,780	1,795	3,535	4,695	4,695	270	625
6,395	11,130	3,190	3,805	435	1,960	2,000	2,015	3,980	5,270	5,270	290	690
5,325	9,650	2,725	3,385	330	1,500	1,535	1,560	3,055	4,250	4,250	255	535
5,990	10,595	2,945	3,585	435	1,790	1,825	1,825	3,565	4,670	4,670	280	600
6,505	11,415	3,190	3,960	435	2,035	2,075	2,100	4,025	5,335	5,335	320	670
7,055	12,160	3,430	4,295	435	2,255	2,300	2,420	4,500	6,000	6,000	340	735
7,690	13,065	3,535	4,610	435	2,500	2,555	2,685	5,020	6,660	6,660	365	795

# Additional Windows and Doors

Additional Windows	Fixed		Opening	
	Single Glazed	Double Glazed	Single Glazed	Double Glazed
Standard Redwood	115	230	160	275
Standard Pressure Treated	120	240	165	285
Standard Cedar	175	295	220	340
Georgian Redwood	230	-	270	-
Georgian Pressure Treated	235	-	275	-
Georgian Cedar	325	-	365	-

Other Options	1.22m (6')	2.44m (8')	3.05m (10')	3.66m (12')
Redwood Partition	280	395	585	740
Pressure Treated Partition	340	480	710	905
Cedar Partition	655	905	1255	1580

0.23m (9") Wide Shelf	65 per running metre
0.38m (15") Wide Shelf	80 per running metre
0.38m (15") Wide Workbench	80 per running metre
0.61m (24") Wide Workbench	100 per running metre
Guttering per side	65 per running metre
Composite Decking Upgrade	270 per square metre

Malvern Apex Depth	1.22m (4')	1.83m (6')	2.44m (8')	3.05m (10')	3.66m (12')	4.27m (14')	4.88m (16')	5.49m (18')	6.10m (20')
Georgian Single Glazed Windows	150	150	295	295	440	585	585	585	585
Additional 0.91m (3') Logstore	355	460	585	710	825	930	1,065	1,200	1,330

Single Malvern Door or Double Door in lieu of single	
Redwood	350
Pressure Treated/Barnstyle	405
Cedar	525

Additional Window in Door	Single Glazed	Double Glazed
Standard Redwood	115	230
Standard Pressure Treated	120	240
Standard Cedar	175	295
Georgian Redwood	230	-
Georgian Pressure Treated	235	-
Georgian Cedar	325	-

Stable Door Conversion in lieu of standard	155
--	-----

Hook & Band Hinges	55 per door
Security Pack for Doors	200

## Standard Features

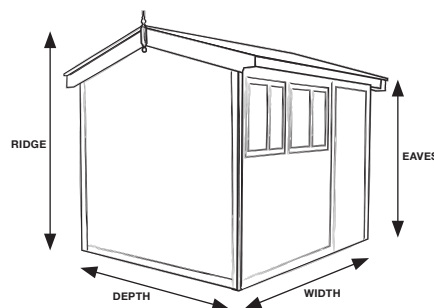
- All ridge heights under 2.5m
- Heavy duty framework throughout
- Additional diagonal framework for extra rigidity and strength
- Heavy duty floor
- Pressure treated floor joists
- Tongue and groove timber roof and floor
- Polyester mineral felt – available in green, black or red
- Fully framed, ledged and braced single door
- 3 lever mortice lock
- 3 heavy duty hinges per door
- Single glazed 4mm toughened glass
- Black or chrome ironmongery - please specify at time of order
- Joinery made fixed and lockable opening windows
- High quality timber treatment applied throughout prior to delivery (excluding pressure treated)
- A wide range of sizes to choose from

Size w x d (m)	Size w x d (ft)	Heavy Duty Redwood	Heavy Duty Pressure Treated	Heavy Duty Redwood Barnstyle
2.44 x 1.83	8' x 6'	2,180	2,400	2,180
3.05 x 1.83	10' x 6'	2,770	3,045	2,770
3.66 x 1.83	12' x 6'	2,945	3,240	2,945
4.27 x 1.83	14' x 6'	3,465	3,810	3,465
4.88 x 1.83	16' x 6'	3,860	4,245	3,860
3.05 x 2.44	10' x 8'	3,280	3,610	3,280
3.66 x 2.44	12' x 8'	3,515	3,865	3,515
4.27 x 2.44	14' x 8'	3,955	4,350	3,955
4.88 x 2.44	16' x 8'	4,315	4,745	4,315
5.49 x 2.44	18' x 8'	4,695	5,165	4,695
6.10 x 2.44	20' x 8'	5,055	5,560	5,055
3.05 x 3.05	10' x 10'	3,920	4,310	3,920
3.66 x 3.05	12' x 10'	4,260	4,685	4,260
4.27 x 3.05	14' x 10'	4,810	5,290	4,810
4.88 x 3.05	16' x 10'	5,245	5,770	5,245
5.49 x 3.05	18' x 10'	5,700	6,270	5,700
6.10 x 3.05	20' x 10'	6,195	6,815	6,195
3.66 x 3.66	12' x 12'	4,725	5,200	4,725
4.27 x 3.66	14' x 12'	5,330	5,865	5,330
4.88 x 3.66	16' x 12'	5,800	6,380	5,800
5.49 x 3.66	18' x 12'	6,300	6,930	6,300
6.10 x 3.66	20' x 12'	6,875	7,565	6,875

**FOR HIGH PITCH VERSION - ADD 10% TO BUILDING  
 AND ANY ADDITIONAL ROOF OPTION**

## Options

- A choice of Heavy Duty Redwood, Heavy Duty Pressure Treated, Heavy Duty Redwood Barnstyle, Heavy Duty Pressure Treated Barnstyle or Western Red Cedar cladding
- Higher pitch roof
- Coloured painted finish – wide selection of colours
- Bitumen mineral roof felt tiles, available in green, red or black
- Onduline roof
- Pressure treated slatted roof
- Slate effect roof tiles - a choice of 3 colours available
- Cedar slatted roof
- Pressure treated cedar shingle roof
- Double glazing (excluding Georgian)
- Tongue and groove timber lining plus insulation
- Internal partition walls
- High level security fixed windows in lieu of opening at no additional cost
- Georgian style windows
- Integral Tidystore, 0.91m (3') wide unless specified otherwise
- Integral open sided area
- Composite decking upgrade to open area
- Hook and band hinges
- Security pack including 6 pin lock and security screws
- Guttering and downpipe in a choice of three colours
- Heavy duty workbenches and shelves
- Double door upgrade
- A set of pressure treated floor bearers



### MALVERN HEAVY DUTY REVERSE APEX

Depth	External		
	Ridge		Eaves
	Low	High	
1.83m (6')	2.33m	2.51m	2.04m
2.44m (8')	2.41m	2.65m	
3.05m (10')	2.43m	2.79m	
3.66m (12')	2.49m	2.94m	

Depth	Internal (unlined)		
	Ridge		Eaves
	Low	High	
1.83m (6')	2.20m	2.43m	2.02m
2.44m (8')	2.29m	2.57m	
3.05m (10')	2.29m	2.71m	
3.66m (12')	2.35m	2.85m	

Heavy Duty Pressure Treated Barnstyle	Standard Cedar	Coloured Painted Finish	Tongue & Grooved Lining & Insulation	Double Glazing	Bitumen Felt Roof Tiles	Onduline Roof	Pressure Treated Slatted Roof	Cedar Slatted Roof	Cedar Shingle Roof	Slate Effect Tiled Roof	Floor Bearers	Installation
2,400	5,010	1,575	1,630	110	595	605	675	1,290	1,730	1,730	120	170
3,045	6,030	1,780	1,910	220	740	760	820	1,625	2,155	2,155	130	205
3,240	6,470	1,970	2,205	220	900	925	980	1,955	2,570	2,570	135	225
3,810	6,995	2,200	2,445	330	1,030	1,055	1,140	2,265	2,985	2,985	140	245
4,245	7,525	2,440	2,700	330	1,200	1,220	1,315	2,570	3,415	3,415	150	265
3,610	6,995	2,025	2,270	220	940	965	980	1,985	2,565	2,565	150	280
3,865	7,495	2,230	2,540	330	1,115	1,140	1,140	2,340	3,075	3,075	170	305
4,350	8,255	2,420	2,845	330	1,280	1,310	1,330	2,720	3,570	3,570	200	340
4,745	8,910	2,605	3,145	330	1,435	1,470	1,560	3,090	4,075	4,075	220	385
5,165	9,585	2,815	3,420	330	1,665	1,700	1,780	3,490	4,570	4,570	245	420
5,560	10,260	3,030	3,700	330	1,835	1,875	1,885	3,885	5,070	5,070	270	465
4,310	7,995	2,325	2,610	220	1,110	1,135	1,140	2,295	2,995	2,995	200	430
4,685	8,595	2,480	2,915	330	1,315	1,340	1,365	2,785	3,535	3,535	220	495
5,290	9,470	2,685	3,385	330	1,520	1,555	1,560	3,055	4,120	4,120	245	560
5,770	10,250	2,890	3,540	330	1,740	1,780	1,795	3,535	4,695	4,695	270	625
6,270	10,955	3,190	3,805	330	1,960	2,000	2,015	3,980	5,270	5,270	290	690
6,815	11,685	3,430	4,035	330	2,160	2,210	2,235	4,405	5,850	5,850	320	755
5,200	9,475	2,725	3,385	330	1,500	1,535	1,560	3,055	4,105	4,105	255	535
5,865	10,420	2,945	3,585	330	1,790	1,825	1,825	3,565	4,670	4,670	280	600
6,380	11,240	3,190	3,960	330	2,035	2,075	2,100	4,025	5,335	5,335	320	670
6,930	11,985	3,430	4,295	330	2,255	2,300	2,420	4,500	6,000	6,000	340	735
7,565	12,890	3,535	4,610	330	2,500	2,555	2,685	5,020	6,660	6,660	365	795

# Additional Windows and Doors

Additional Windows	Fixed		Opening	
	Single Glazed	Double Glazed	Single Glazed	Double Glazed
Standard Redwood	115	230	160	275
Standard Pressure Treated	120	240	165	285
Standard Cedar	175	295	220	340
Georgian Redwood	230	-	270	-
Georgian Pressure Treated	235	-	275	-
Georgian Cedar	325	-	365	-

Other Options	1.22m (6’)	2.44m (8’)	3.05m (10’)	3.66m (12’)
Redwood Partition	280	395	585	740
Pressure Treated Partition	340	480	710	905
Cedar Partition	655	905	1255	1580

0.23m (9”) Wide Shelf	65 per running metre
0.38m (15”) Wide Shelf	80 per running metre
0.38m (15”) Wide Workbench	80 per running metre
0.61m (24”) Wide Workbench	100 per running metre
Guttering per side	65 per running metre
Composite Decking Upgrade	270 per square metre

Malvern Apex Reverse Width	2.44m (8’)	3.05m (10’)	3.66m (12’)	4.27m (14’)	4.88m (16’)	5.49m (18’)	6.10m (20’)
Georgian Single Glazed Windows	150	295	295	440	440	440	440

Malvern Apex Reverse Depth - Integral Tidystore	1.83m (6’)	2.44m (8’)	3.05m (10’)	3.66m (12’)
Redwood	245	325	405	475
Pressure Treated/Barnstyle	290	380	475	545
Cedar	650	875	1,135	1,330

Single Malvern Door or Double Door in lieu of single	
Redwood	350
Pressure Treated/Barnstyle	405
Cedar	525

Additional Window in Door	Single Glazed	Double Glazed
Standard Redwood	115	230
Standard Pressure Treated	120	240
Standard Cedar	175	295
Georgian Redwood	230	-
Georgian Pressure Treated	235	-
Georgian Cedar	325	-

Stable Door Conversion in lieu of standard	155
--	-----

Hook & Band Hinges	55 per door
Security Pack for Doors	200

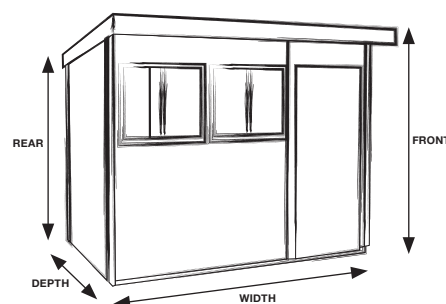
## Standard Features

- Front height under 2.5m
- Heavy duty framework throughout
- Additional diagonal framework for extra rigidity and strength
- Heavy duty floor
- Pressure treated floor joists
- Tongue & groove timber roof and floor
- Polyester mineral felt – available in green, black or red
- Fully framed, ledged and braced single door
- 3 lever mortice lock
- 3 heavy duty hinges per door
- Single glazed 4mm toughened glass
- Black or chrome ironmongery - please specify at time of order
- 0.23m (9") roof overhang to front
- Joinery made fixed and lockable opening windows
- High quality timber treatment applied throughout prior to delivery (excluding pressure treated)
- A wide range of sizes to choose from

Size w x d (m)	Size w x d (ft)	Heavy Duty Redwood	Heavy Duty Pressure Treated
1.83 x 1.22	6' x 4'	1,520	1,670
2.13 x 1.52	7' x 5'	1,880	2,070
2.44 x 1.83	8' x 6'	2,180	2,400
3.05 x 1.83	10' x 6'	2,770	3,045
3.66 x 1.83	12' x 6'	2,945	3,240
4.27 x 1.83	14' x 6'	3,465	3,810
4.88 x 1.83	16' x 6'	3,860	4,245
2.44 x 2.44	8' x 8'	2,815	3,095
3.05 x 2.44	10' x 8'	3,280	3,610
3.66 x 2.44	12' x 8'	3,515	3,865
4.27 x 2.44	14' x 8'	3,955	4,350
4.88 x 2.44	16' x 8'	4,315	4,745
5.49 x 2.44	18' x 8'	4,695	5,165
6.10 x 2.44	20' x 8'	5,055	5,560
3.05 x 3.05	10' x 10'	3,920	4,310
3.66 x 3.05	12' x 10'	4,260	4,685
4.27 x 3.05	14' x 10'	4,810	5,290
4.88 x 3.05	16' x 10'	5,245	5,770
5.49 x 3.05	18' x 10'	5,700	6,270
6.10 x 3.05	20' x 10'	6,195	6,815

## Options

- A choice of Heavy Duty Redwood, Heavy Duty Pressure Treated, Heavy Duty Redwood Barnstyle, Heavy Duty Pressure Treated Barnstyle or Western Red Cedar cladding
- Coloured painted finish – wide selection of colours
- EPDM rubber roof
- Tongue and groove lining plus insulation
- Internal partition wall
- High level security fixed windows in lieu of opening at no additional cost
- Georgian style windows
- Double glazing (excluding Georgian)
- Integral Tidystore conversion
- Integral open sided area
- Composite decking upgrade to open area
- Hook and band hinges
- Security pack including 6 pin lock and security screws
- Guttering and downpipe in a choice of three colours
- Heavy duty workbenches and shelves
- Double door upgrade
- A set of pressure treated floor bearers



MALVERN HEAVY DUTY PENT		
Depth	Front Height	Rear Height
1.83m (6')	2.22m	2.02m
2.44m (8')	2.22m	2.02m
3.05m (10')	2.24m	2.04m
Single Door	0.89m wide	



Heavy Duty Redwood Barnstyle	Heavy Duty Pressure Treated Barnstyle	Standard Cedar	Coloured Painted Finish	Tongue & Grooved Lining & Insulation	Double Glazing	EPDM Rubber Roof	Floor Bearers	Installation
1,520	1,670	3,815	1,170	1,120	110	185	85	110
1,880	2,070	4,540	1,365	1,365	110	260	105	125
2,180	2,400	5,010	1,575	1,630	110	360	120	170
2,770	3,045	6,030	1,780	1,910	220	445	130	205
2,945	3,240	6,470	1,970	2,205	220	525	135	225
3,465	3,810	6,995	2,200	2,445	330	620	140	245
3,860	4,245	7,525	2,440	2,700	330	710	150	265
2,815	3,095	6,150	1,825	1,960	110	475	140	260
3,280	3,610	6,995	2,025	2,270	220	595	150	280
3,515	3,865	7,495	2,230	2,540	220	710	170	305
3,955	4,350	8,255	2,420	2,845	330	825	200	340
4,315	4,745	8,910	2,605	3,145	330	950	220	385
4,695	5,165	9,585	2,815	3,420	330	1,060	245	420
5,055	5,560	10,260	3,030	3,700	330	1,180	270	465
3,920	4,310	7,995	2,325	2,610	220	740	200	430
4,260	4,685	8,595	2,480	2,915	220	890	220	495
4,810	5,290	9,470	2,685	3,385	330	1,035	245	560
5,245	5,770	10,250	2,890	3,540	330	1,180	270	625
5,700	6,270	10,955	3,190	3,805	330	1,335	290	690
6,195	6,815	11,685	3,430	4,035	330	1,485	320	755

# Additional Windows and Doors

Additional Windows	Fixed		Opening	
	Single Glazed	Double Glazed	Single Glazed	Double Glazed
Standard Redwood	115	230	160	275
Standard Pressure Treated	120	240	165	285
Standard Cedar	175	295	220	340
Georgian Redwood	230	-	270	-
Georgian Pressure Treated	235	-	275	-
Georgian Cedar	325	-	365	-

Other Options	1.22m (6’)	2.44m (8’)	3.05m (10’)
Redwood Partition	280	395	585
Pressure Treated Partition	340	480	710
Cedar Partition	655	905	1255

0.23m (9”) Wide Shelf	65 per running metre
0.38m (15”) Wide Shelf	80 per running metre
0.38m (15”) Wide Workbench	80 per running metre
0.61m (24”) Wide Workbench	100 per running metre
Guttering per side	65 per running metre
Composite Decking Upgrade	270 per square metre

Malvern Pent Width	2.44m (8’)	3.05m (10’)	3.66m (12’)	4.27m (14’)	4.88m (16’)	5.49m (18’)	6.10m (20’)
Georgian Single Glazed Windows	150	295	295	440	440	440	440

Malvern Pent Depth - Additional Tidystore	1.83m (6’)	2.44m (8’)	3.05m (10’)
Redwood	245	325	405
Pressure Treated	290	380	475
Cedar	650	875	1,135

Single Malvern Door or Double Door in lieu of single	
Redwood	350
Pressure Treated/Barnstyle	405
Cedar	525

Additional Window in Door	Single Glazed	Double Glazed
Standard Redwood	115	230
Standard Pressure Treated	120	240
Standard Cedar	175	295
Georgian Redwood	230	-
Georgian Pressure Treated	235	-
Georgian Cedar	325	-

Stable Door Conversion in lieu of standard	155
--	-----

Hook & Band Hinges	55 per door
Security Pack for Doors	200

# Glossary of Terms

## Coloured Painted Finish

A comprehensive paint system is applied prior to the building leaving the factory. The paint system comprises of an initial undercoat and a further top coat of your chosen colour.

## Higher Pitched Roof

For those that require extra internal height.

## Tongue & Groove lining and insulation

Building is internally lined with foil back bubble insulation and covered with redwood tongue and groove matchboard.

## Bitumen Felt Tiles

Roof is covered with tile effect heavy duty felt tiles.

## Slatted Roof

An aesthetic roof made with featheredged pressure treated redwood or Western Red cedar boards to enhance the appearance of your building and provide added protection to the roofing felt beneath.

## Cedar Shingle Roof

Western Red cedar shingles fixed to pressure treated joists to enhance the appearance of your building and provide added protection to the roofing felt beneath.

## EPDM Rubber Roof

A maintenance free synthetic rubber membrane covering the roof as an alternative to roofing felt.

## Slate Effect Roof Tile

Slate effect roof tile is a synthetic roof tile which emulates the appearance of natural slates and has a long life span with no maintenance.

## Guttering

Guttering is available in a choice of three colours.

## Integral Open Sided Area

Malvern Sheds (excluding Corner) can be divided into rooms with an open space decking area. Timber decking is used for this open area, with composite decking available as an upgrade.

## Composite Decking

A high density, heavy duty and weather resistant wood composite.

## Heavy Duty Floor Upgrade

As standard the floor is 13mm Redwood floor boards, the heavy duty floor upgrade is a 19mm Redwood unless your building is pressure treated cladding and then it is 19mm Pressure Treated Redwood.

## Black or chrome ironmongery

Substitute ironmongery for either black or chrome to suit your requirements.

## A set of Floor Bearers

Floor Bearers are 45 x 45mm (2" x 2") pressure treated lengths of timber which run in an opposite direction to the floor joists making a crisscross formation, allowing air circulation and ventilation to your garden building, taking away direct contact from the base and helps prevent damp from attacking the timbers.

BEWDLEY DOOR OPENINGS (W X H)	
1.22m (4') wide Apex	0.66m x 1.63m
1.52m (5') wide Apex	0.89m x 1.63m
1.83m (6') wide Pent	0.66m x 1.75m
All other Single Doors	0.89m x 1.75m
Double Doors on 2.44m (8') Apex	1.50m x 1.75m

Victorian Door	
Single Door	0.76m x 1.98m

WALL THICKNESS	
Redwood Standard Cladding	13mm
Cedar Cladding	12mm
Barnstyle Cladding	8-23mm
Redwood & Pressure Treated Heavy Duty Cladding	19mm
Framing	45mm
Tongue and Groove Lining	12mm
Skirting	12mm

MALVERN DOOR OPENINGS (W X H)	
1.22m (4') wide Apex	0.68m x 1.75m
1.52m (5') wide Apex	0.89m x 1.75m
All other Apex Doors	0.89m x 1.85m
Apex Narrow Double Doors	1.37m x 1.85m
Apex Wide Double Doors	1.77m x 1.85m
Reverse Apex, Pent and Potting Shed	0.89m x 1.75m
Reverse Apex and Pent Narrow Double Doors	1.37m x 1.75m
Reverse Apex and Pent Wide Double Doors	1.77m x 1.75m

FLOOR THICKNESS	
Standard Floor	13mm
Heavy Duty Floor	19mm
Pressure Treated Joists	45mm

# Important Points

## **to note**

All of our Sheds, Workshops, Potting Sheds and Cedar Greenhouses come with a guarantee against rot and decay. Twelve years for cedar, eight years for pressure treated and redwood.

All other workmanship and materials are guaranteed to be free from defects and faulty installation for a period of 12 months. All of our guarantees are subject to the buildings being maintained in line with our recommendations.

Our recommendations are that all timber garden structures require ongoing maintenance following installation. Cedar, redwood & pressure treated redwood require annual timber treatment to be applied, ideally prior to the colder wetter months for added protection. We recommend all spray painted buildings are maintained on an annual basis, inspect the painted areas on the building, checking for any areas where the paint finish maybe starting to deteriorate over time, peeling or flaking and repaint where necessary. A full guide of maintenance guidelines are available on request.

All base work is the responsibility of the customer, as is the safe securing of the building once installed, excluding cedar victorian. We require a level solid base, either paving slabs, decking or concrete upon which to install your building. In the event of a base failure, it is the customers responsibility to accept delivery of the building, safely and store appropriately.

Please allow as much room as possible around the building for our fitters to work during installation, a minimum of 450mm. If this is not possible please contact the office to discuss.

Our installers will need clear access to carry building sections from the vehicle to your prepared base, with no height restrictions or tight, sharp corners to negotiate.

Our installers cannot lift sections over 1.22m in height or over buildings such as garages. If the only access is through the house, a straight run is required and many sections will not pass through doorways. Please advise us in advance if there are any difficulties regarding access.

Always make allowance for any roof overhang when buildings have to go into confined spaces.

All redwood and cedar sheds have redwood roofs and floors. Cedar buildings have cedar windows, doors and external cladding only i.e. they have redwood framing, floors, roofs and open areas. All pressure treated sheds are pressure treated throughout.

Bewdley ironmongery is black. Malvern ironmongery is black or chrome as standard and this must be specified on order. Victorian Greenhouse ironmongery is brass or chrome but must be specified at time of ordering.

All building dimensions shown in this brochure are approximate, based on floor sizes.

All timber used in the construction of our buildings originates from sustainable forests.

As it is our policy to continually improve products, methods and materials, we reserve the right to change specifications from time to time, we will not make any significant variations without your agreement.

All images and descriptions are for illustration purposes only and are not always standard specification.

All building sizes are approximate and for guidelines only. All timber measurements, if stated, are finished sizes only i.e. after machining. Please note that finished sizes can vary by plus or minus 1mm.

We strongly advise that you visit one of our showrooms to view the range of buildings and finishes.

*Other ranges available...*



Garden Studios



Cottage Rooms & Summerhouses



Garden Rooms & Offices

## **Quality Garden Rooms**

Manufactured and installed by The Malvern Collection Limited. All prices include VAT and delivery to mainland England, Wales and Scotland\* up to the Caledonian Canal.

\*Restrictions may apply.

MARCH 2023